

# International Convention on the Elimination of All Forms of Racial Discrimination

## Singapore's Initial Report

### Annex – Charts

Figure 1: Age distribution of resident population<sup>1</sup>

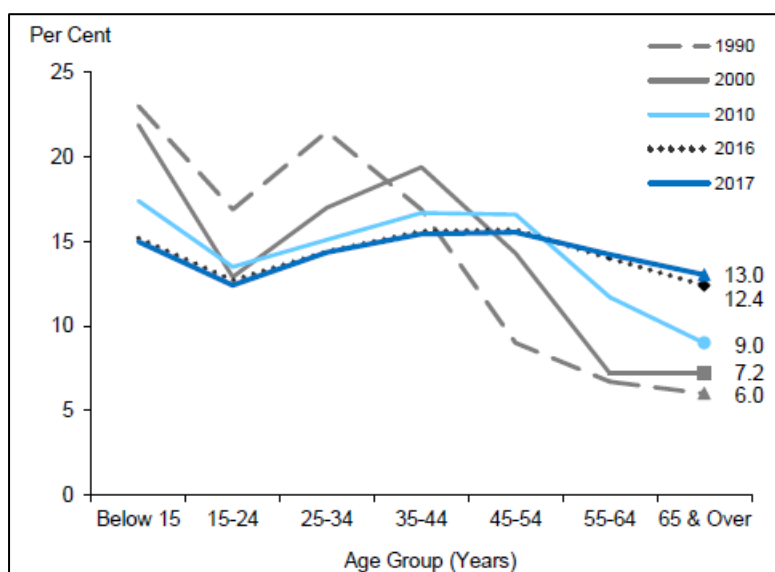
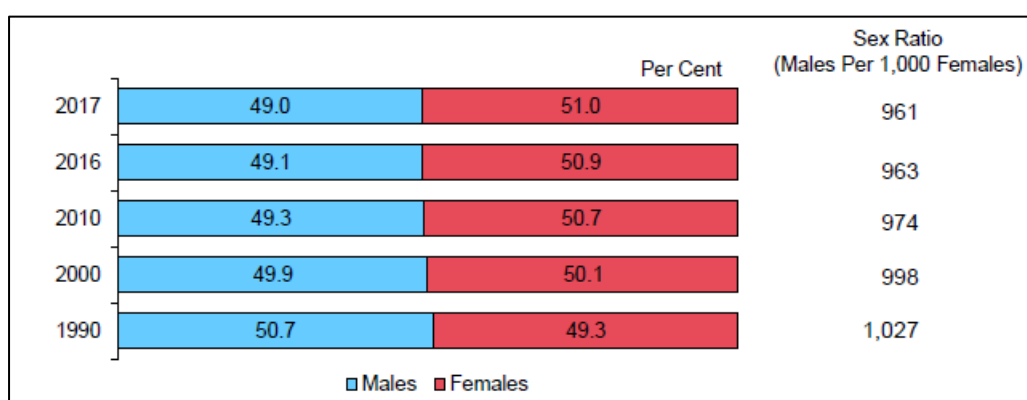


Figure 2: Male-female composition of resident population<sup>2</sup>



<sup>1</sup> Department of Statistics, Population Trends 2017.

<sup>2</sup> Department of Statistics, Population Trends 2017.

Figure 3: Ethnic composition of resident population<sup>3</sup>

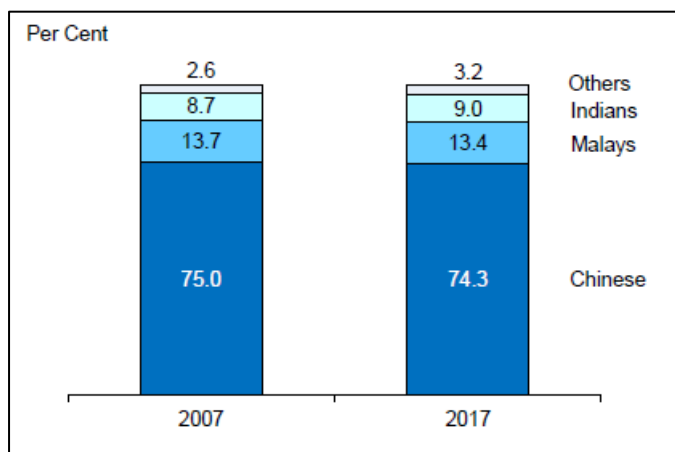
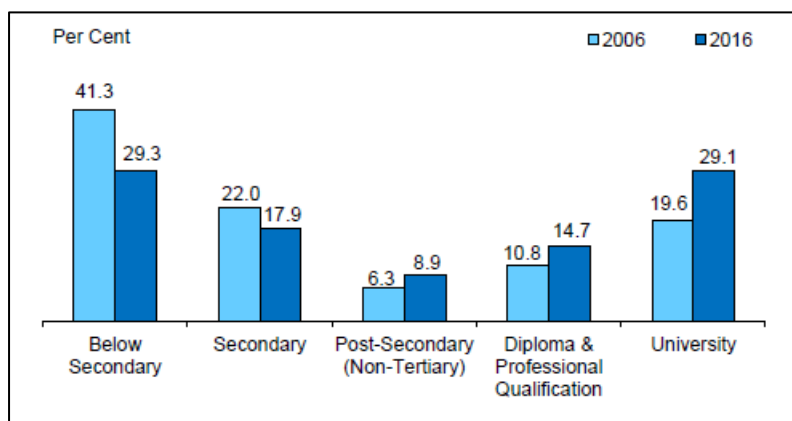


Figure 4: Highest qualification attained of resident population aged 25 years and over<sup>4</sup>



<sup>3</sup> Department of Statistics, Population Trends 2017.

<sup>4</sup> Department of Statistics, Population Trends 2017.

Figure 5: Ethnic Distribution by Planning Area<sup>5</sup>

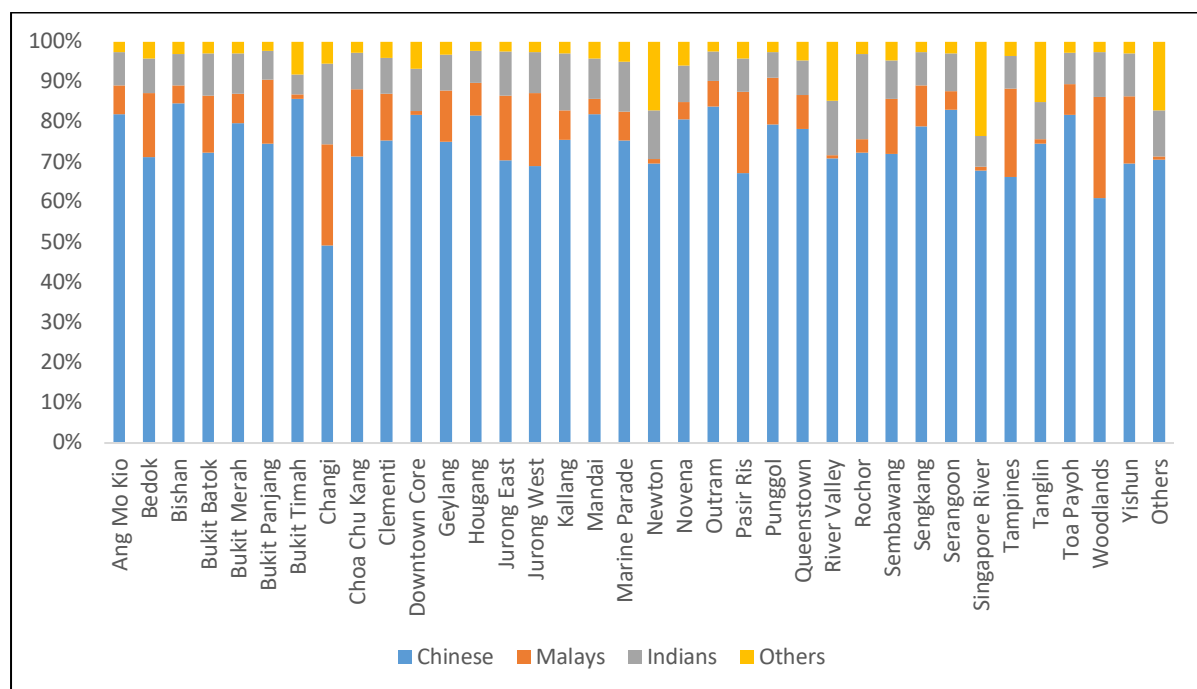
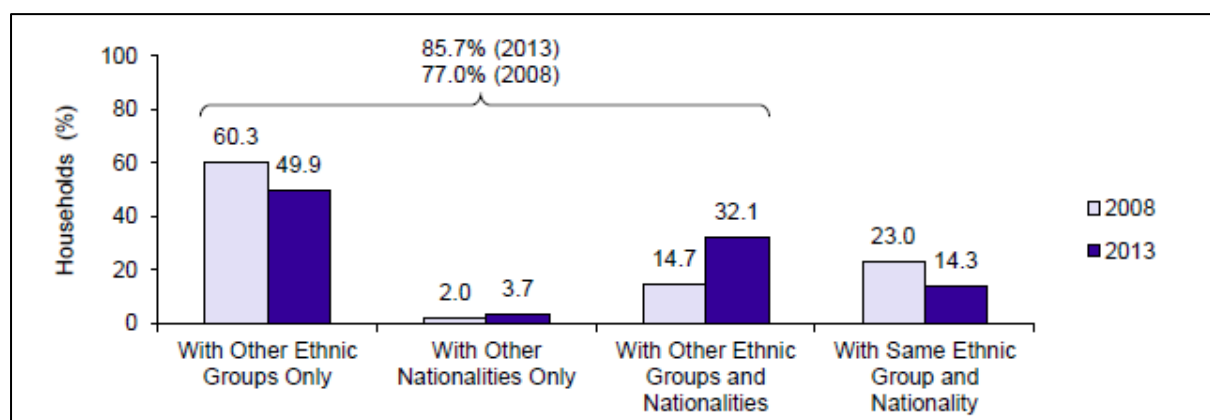


Figure 6: Engagement in Inter-Ethnic/Nationality Interaction by Year<sup>6</sup>



<sup>5</sup> Department of Statistics, Population Census 2010.

<sup>6</sup> HDB Sample Household Survey 2013.

Figure 7: Percentage of O-Level Students with at least 5 Passes by Ethnic Group<sup>7</sup>

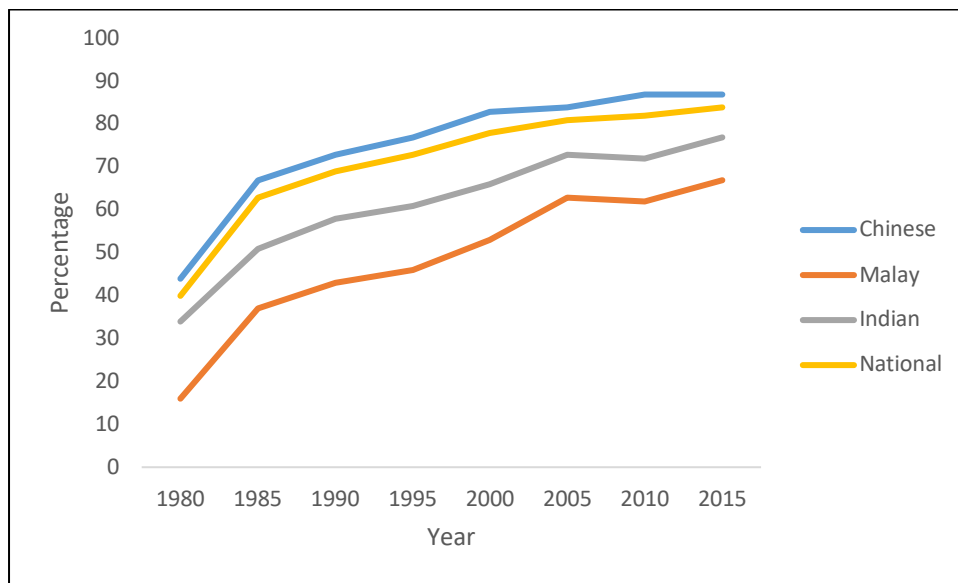
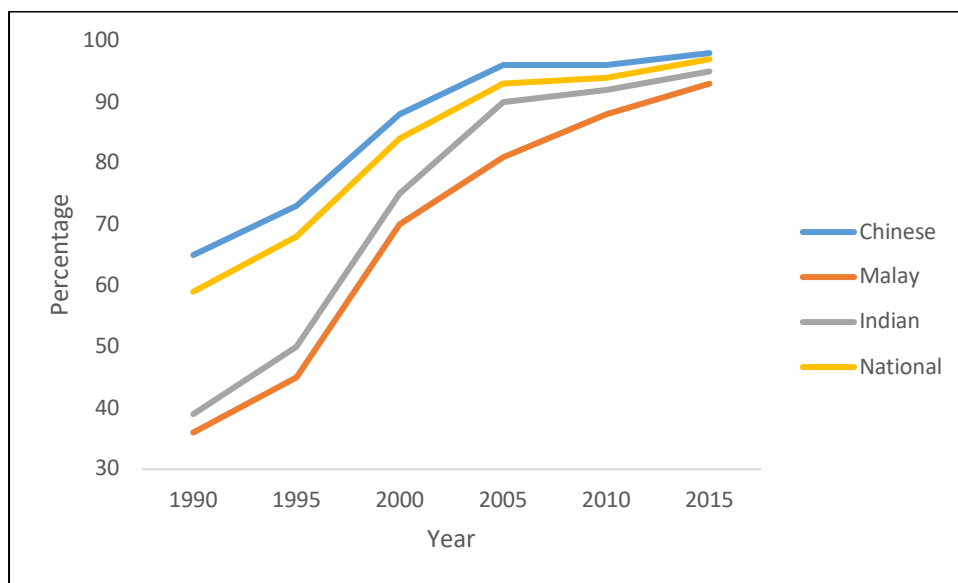


Figure 8: Percentage of Primary 1 Cohort that Progressed to Post-Secondary Education<sup>8</sup>



<sup>7</sup> Education Statistics Digest 2016; Progress of the Malay Community in Singapore since 1980.

<sup>8</sup> Education Statistics Digest 2016; Progress of the Malay Community in Singapore since 1980.